

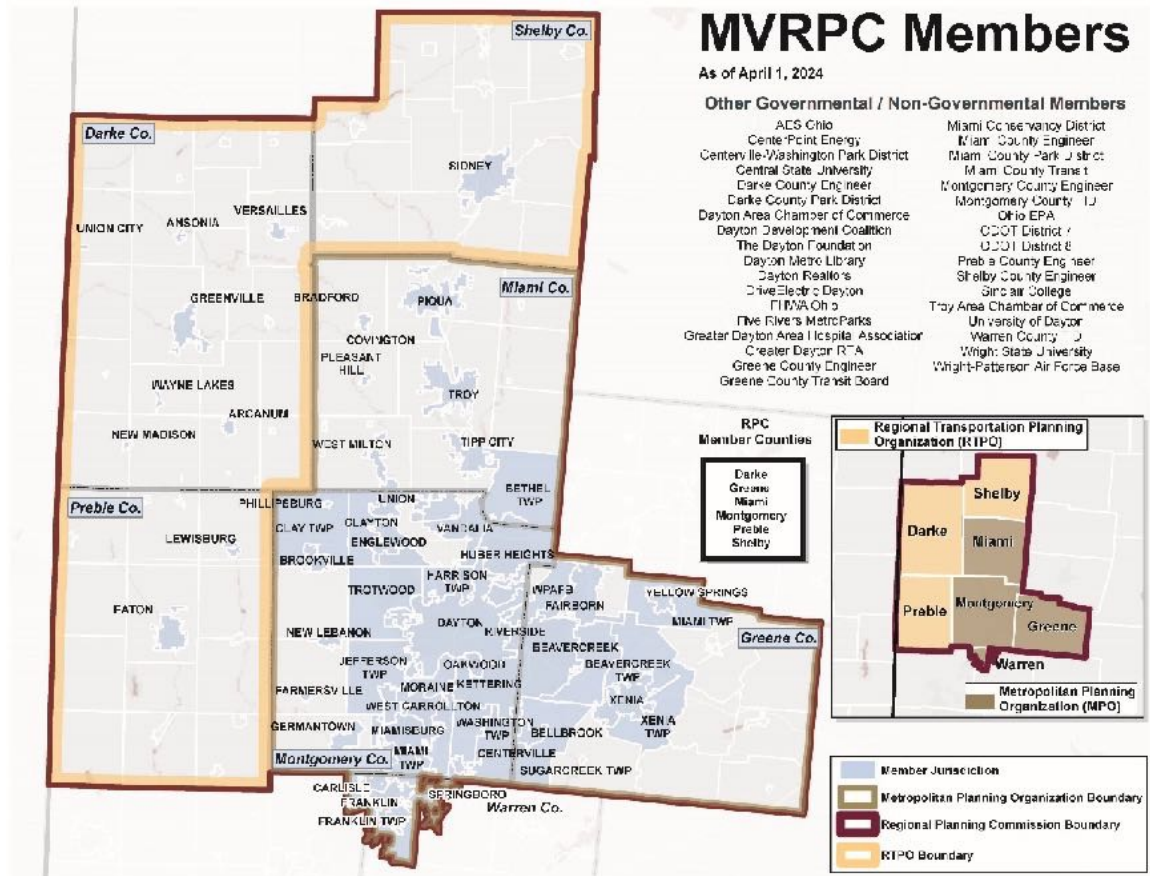


# Using Regional Partnerships to Create Resiliency in your Community

Elizabeth Baxter  
Manager, Disaster Recovery & Economic Development Planning

# Miami Valley Regional Planning Commission

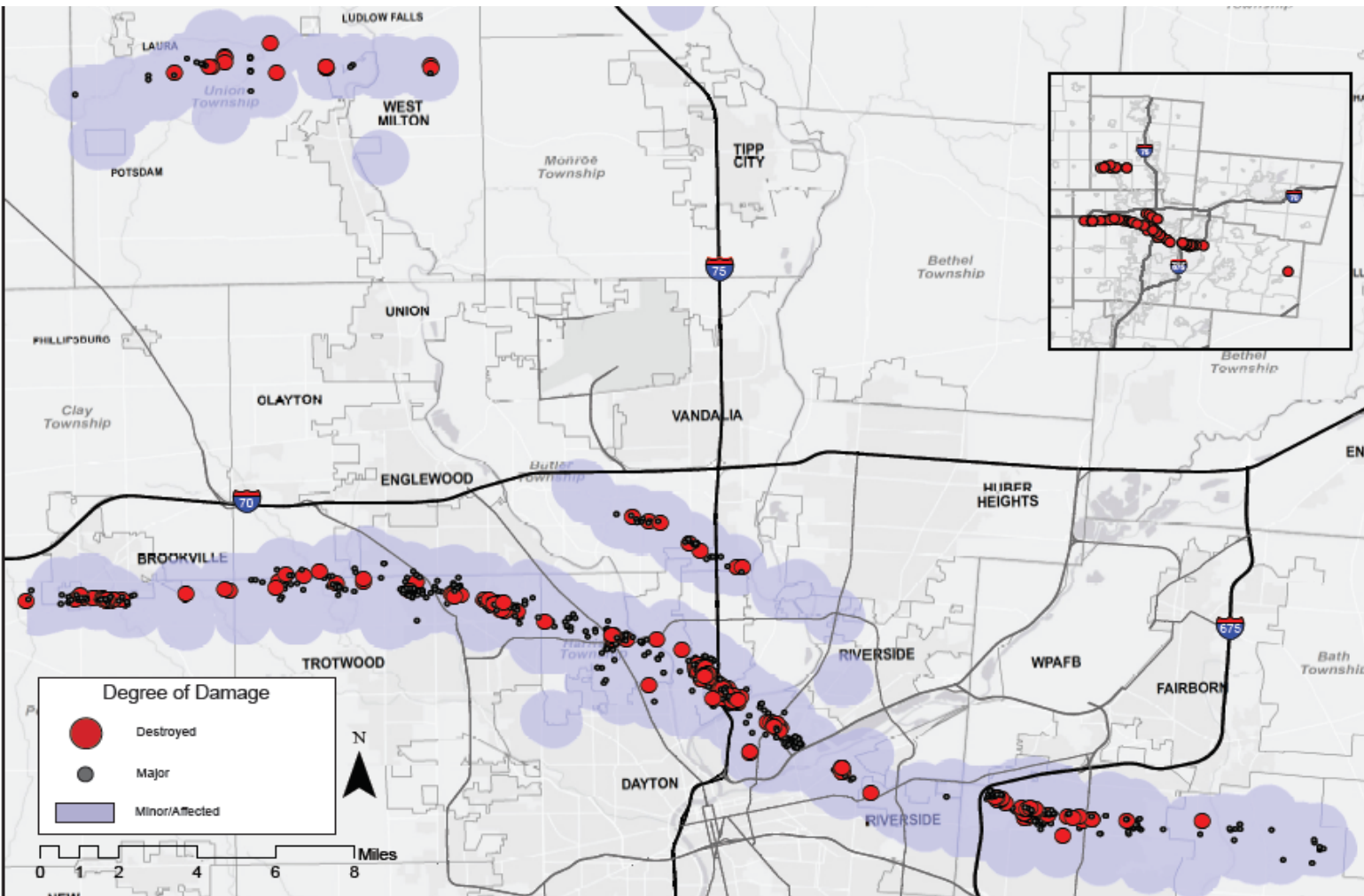
- MVRPC is proud to serve 97 member agencies across 6+ counties in southwest Ohio
- Provide planning & research functions for our region to ensure livable & equitable communities
- Founded upon the principles of regional collaboration, cooperation, and consensus building, MVRPC serves as the common ground where area partners come together to work toward a shared vision across the Region



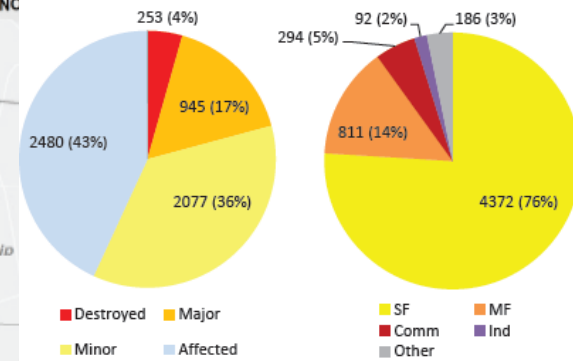


# 2019 Miami Valley Memorial Day Tornado Disaster

## Where we began, May 27, 2019



Jurisdiction	# of Properties Impacted	%
<b>GREENE</b>	<b>1178</b>	<b>20.47%</b>
Beavercreek	1039	18.05%
Beavercreek Twp	135	2.35%
Ross Twp	4	0.07%
<b>MIAMI</b>	<b>143</b>	<b>2.48%</b>
Concord Twp	1	0.02%
Potsdam	5	0.09%
Union Twp	137	2.38%
<b>MONTGOMERY</b>	<b>4434</b>	<b>77.05%</b>
Brookville	213	3.70%
Butler Twp	168	2.92%
Clayton	62	1.08%
Dayton	825	14.34%
Englewood	54	0.94%
Harrison Twp	1850	32.15%
Perry Twp	48	0.83%
Riverside	63	1.09%
Trotwood	1106	19.22%
Vandalia	45	0.78%
<b>TOTAL</b>	<b>5755</b>	<b>100.00%</b>



	Destroyed	Major	Minor	Affected
<b>Single Family</b>	142 (56.1%)	723 (76.5%)	1721 (76.5%)	1786 (72.0%)
<b>Multi Family</b>	32 (12.6%)	120 (12.5%)	143 (6.9%)	516 (20.8%)
<b>Commercial</b>	49 (19.4%)	51 (5.4%)	109 (5.2%)	85 (3.4%)
<b>Industrial</b>	11 (4.3%)	22 (2.3%)	30 (1.4%)	29 (1.2%)
<b>Other</b>	19 (7.5%)	29 (3.1%)	74 (3.6%)	64 (2.6%)
<b>TOTAL</b>	<b>253 (100%)</b>	<b>945 (100%)</b>	<b>2077 (100%)</b>	<b>2480 (100%)</b>



# Establishing a Recovery Network

- Planning is not only a governmental activity it requires cooperation from the whole community

MIAMI VALLEY LONG TERM DISASTER RECOVERY						
The Miami Valley will build a comprehensive, coordinated long term disaster recovery system using the National Disaster Recovery Framework (NDRF) to serve all impacted counties. The NDRF provides guidance to enable recovery by defining recommended roles, responsibilities, coordination and planning among all jurisdictions. Based on decades of disaster response best practices, it focuses on how to restore, redevelop and revitalize the health, social, physical, economic, natural and environmental fabric of community and build resiliency for the future.						
LONG TERM <b>INDIVIDUAL</b> DISASTER RECOVERY NETWORK (Chair, Vice-Chair, Secretary, Fiscal Sponsor)			MIAMI VALLEY DISASTER RECOVERY LEADERSHIP BOARD	LONG TERM <b>COMMUNITY</b> DISASTER RECOVERY NETWORK Miami Valley Regional Planning Commission-Brian O. Martin, Executive Director		
Recovery Director, Individual and Household – Laura Mercer				Recovery Director, Community - TBD		
RESOURCE TABLE: Made up of organizations that have resources to give individuals. Will come and go based on what they have to give.						
FINANCE (Dayton Foundation)	REBUILD & REPAIR (LSS)	DISASTER CASE MANAGEMENT (CSS)		HOUSING (HUD, USDA, DOJ, FEMA)	ECONOMIC RECOVERY (DOC, SBA, USDA, DHS, DOL, USTREAS)	HEALTH & SOCIAL SERVICES RECOVERY (DHHS, CNCS, USDA, DOC, DHS, NPPD, DHS/CRCL, HUD, DOI, DOJ, DOL, EPA, FEMA)
Financial Asset Map	Repair & Rebuild Construction Estimates Project Coordination Material acquisitions and distribution Code Compliance	Intake and Referral Develop Recovery Plans Coordinate w/ Recovery Partners in Delivery of Services and Resources	This high-level advisory group will support both the individual and community long term recovery networks.  It will be comprised of 16 community leaders.	Affordable Housing Permitting & Zoning Strengthen Housing Market Land Use Planning Build Inclusive & Sustainable Communities Mitigation Measures Resilient Construction Implementation Homeownership Programs	Business Recovery Economic Development Workforce Development Community Investments	Restore and improve health care and social service capabilities  Increase resilience and sustainability  Promote independence and well-being of community members  Build community networks
EMOTIONAL & SPIRITUAL CARE (LSS/PMV)	FHLB resources	VOLUNTEER MANAGEMENT		COMMUNITY PLANNING & CAPACITY BUILDING (FEMA)	NATURAL & CULTURAL RESOURCES RECOVERY (DOI, EPA, FEMA)	
Crisis Intervention Develop faith based partnership network Collaborate with disaster case managers Canvas for unmet needs	MATERIAL MANAGEMENT (SVDP) In Kind Donations Warehousing Distribution	Identify Volunteer Opportunities Recruit Qualify & Skill Assess (for select assignments) Assign / Schedule Hospitality & Debrief			Historic Preservation Environmental planning Green Space Community well-being Resource Protection Arts/Culture/History	INFRASTRUCTURE SYSTEMS RECOVERY (USACE, DOE, DHS, DOT, FEMA) Identify/prioritize critical infrastructure systems and assets Create an interagency, inter-jurisdictional recovery planning

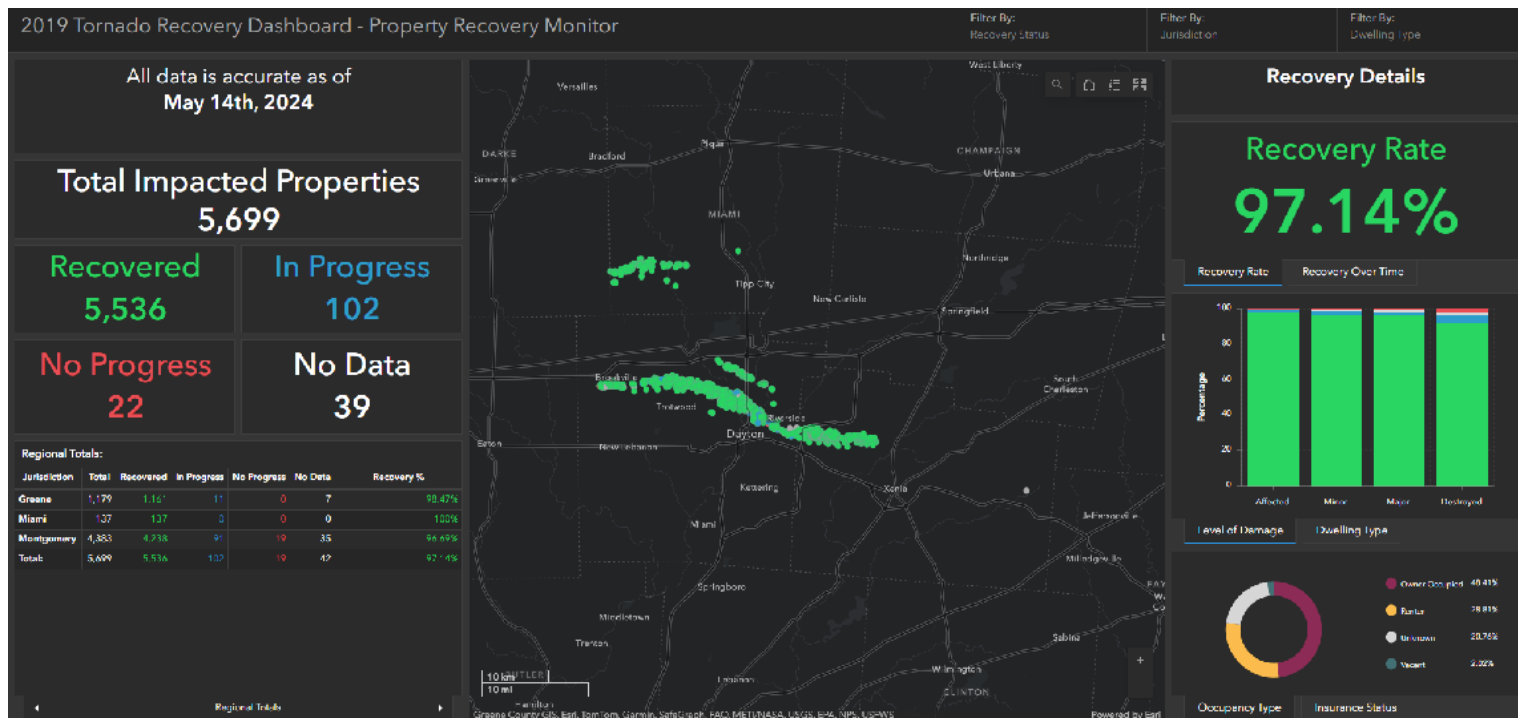
RECOVERY TIMELINE FOR INDIVIDUAL NETWORK: 1-3 YEARS

Draft 01.02.2020

RECOVERY TIMELINE FOR COMMUNITY NETWORK: 1-10 YEARS

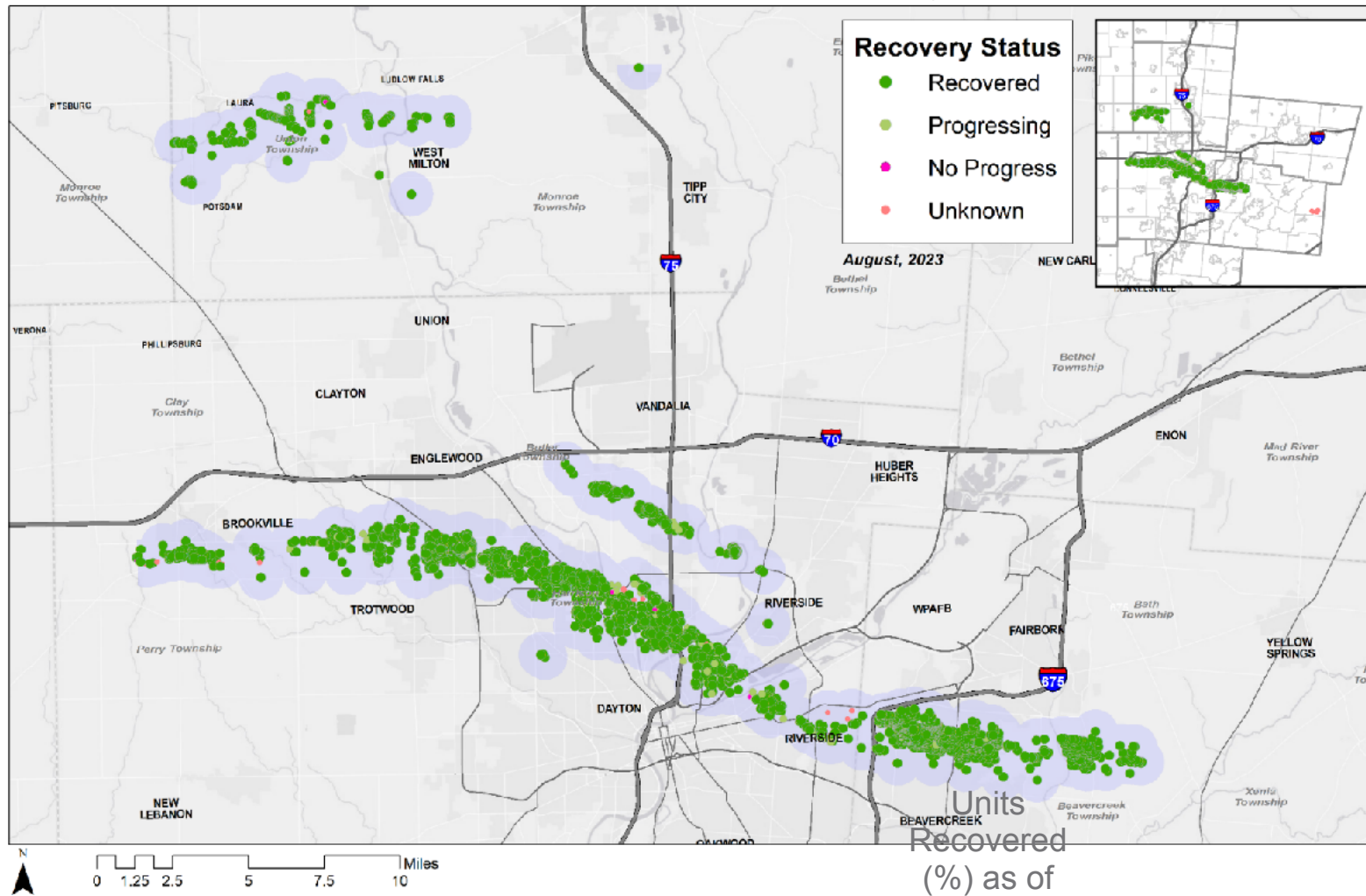
# Benefits of RPC's as Lead in Disaster Recovery

- Natural conveners
- Large established network
- Access to technical tools to track recovery progress (i.e. mapping software)
- Liaison for local jurisdictions to understand federal and state resources
- Planning support & technical assistance for federal fund applications and project administration

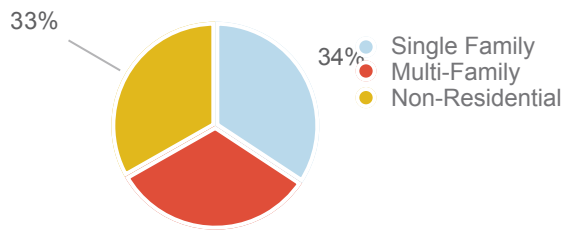


# 2019 Miami Valley Memorial Day Tornado Disaster

## Where we are now, as of May 2024



	Total	Recovered	Progressing	Recovery %
Single Family	4,333	4,200	77	99%
Multi-Family	481	444	4	97%
Non-Residential	512	454	17	97%



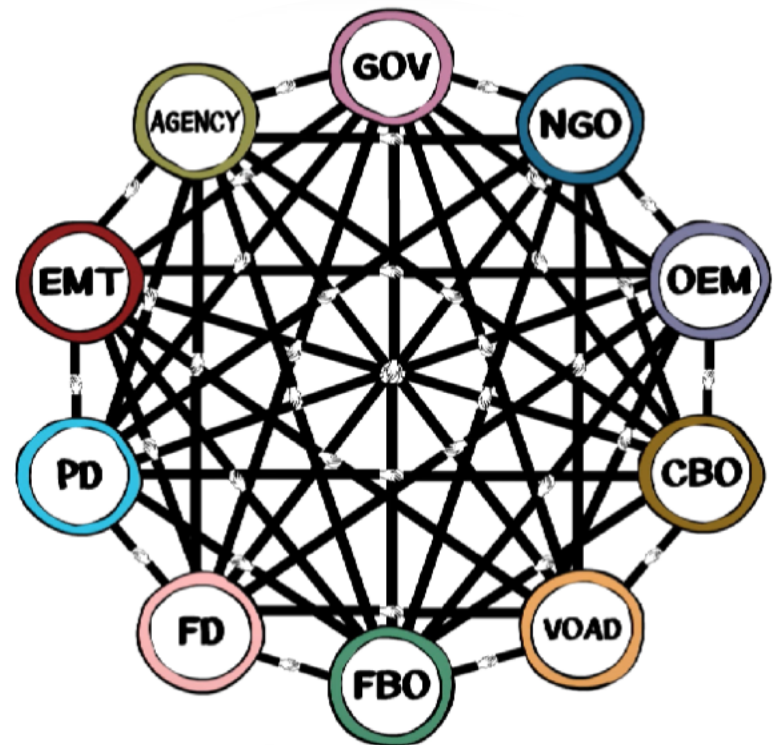


# Planning for Future Natural Threats and Hazards



# Dayton Region COAD

- What is a COAD?
  - **C**ommunity **O**rganization **A**ctive in **D**isaster
  - Comprised of members from our individual and community long term recovery network
- Why is a COAD Important?
  - Response to a natural disaster requires a community wide coordination
  - Not all disasters receive state or federal funding for recovery
- There are groups to support work at the state and national level
  - Ohio VOAD
  - National VOAD





# Dayton Region COAD

---

## What does a COAD do during Blue Skies?



Fosters coordination, communication, collaboration, and cooperation through meetings



Boosts local resilience through education, outreach, and ongoing work



Forms (optional) subgroups to plan for addressing specific needs



Provides input to emergency management on behalf of the community



# Considerations in Resiliency Planning

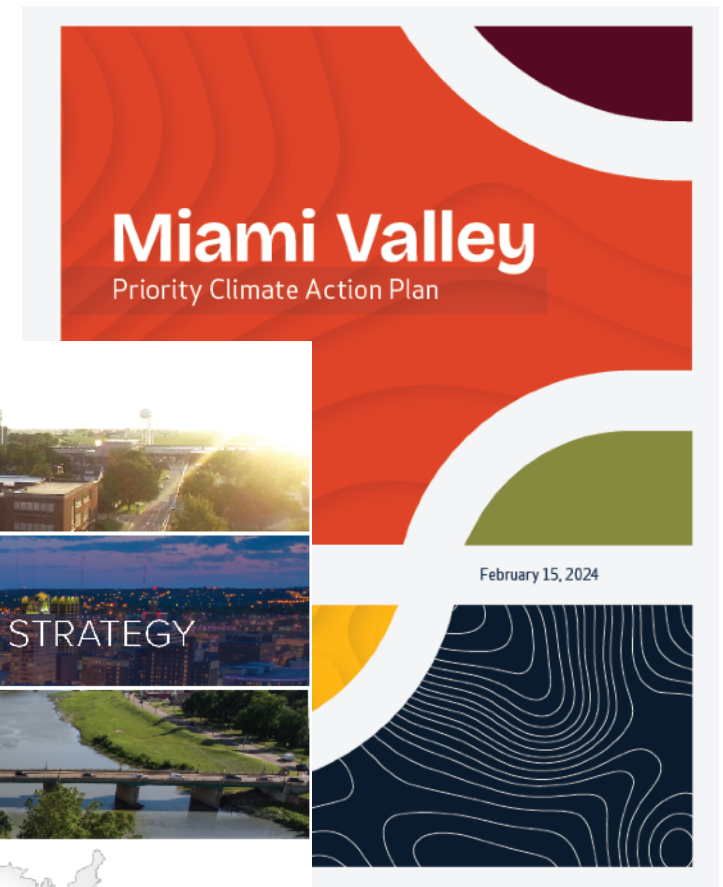
---

- Reviewed what other community plans exist?
  - Housing assessment
  - Strategic plans/Economic development plans
  - Hazard mitigation plan
  - Transportation improvement plans/schedules
  - Land use plans
- Themes and goals from these plans are incorporated into the larger resiliency plan to help mitigate or eliminate impacts from future hazards
  - Include potential projects to help improve built environment
  - Help identify new or additional funding opportunities
- Understanding barriers that may exist to implementing resiliency best practices
  - What is causing these barriers?
  - How can these barriers be overcome? If they cannot, why?
  - What organizations can implement strategies to overcome identified barriers?



# Benefits of Long Term Regional Coordination

- Promotes future resiliency strategies across region
- Allows RPCs/RDOs to incorporate resilient practices into existing member services





# Questions?



[ebaxter@mvrpc.org](mailto:ebaxter@mvrpc.org) 937-531-6538